

PHN and Philanthropy as Partners Symposium

Logan Together - First 2000 days



Baugull nyungai Gurumba bigi Maroomba biggee

We acknowledge the Traditional Custodians of the land on which we live and work, and of the many different nations across the wider Brisbane south region.

We pay our respects to the Elders, past, present and emerging, as the holders of the memories, the traditions, the culture and the spiritual wellbeing of the Aboriginal and Torres Strait Islander peoples across the nation. We acknowledge any Sorry Business that may be affecting the communities as a whole.

In the spirit of reconciliation, partnership and mutual respect, we will continue to work together with Aboriginal and Torres Strait Islander peoples to shape a health system which responds to the needs and aspirations of the community.



First Nations First



We believe that we need to do the work to strengthen cultural ways of knowing. This will see us shift us from western structures and processes into an intrinsic way of working with a First Nations First approach.

Children at the heart



We are helping to ensure children growing up in Logan are loved, safe, valued and thriving. We are working to ensure that the voices of our children directly influence the decisions we make together to ensure their strong futures.

Community led

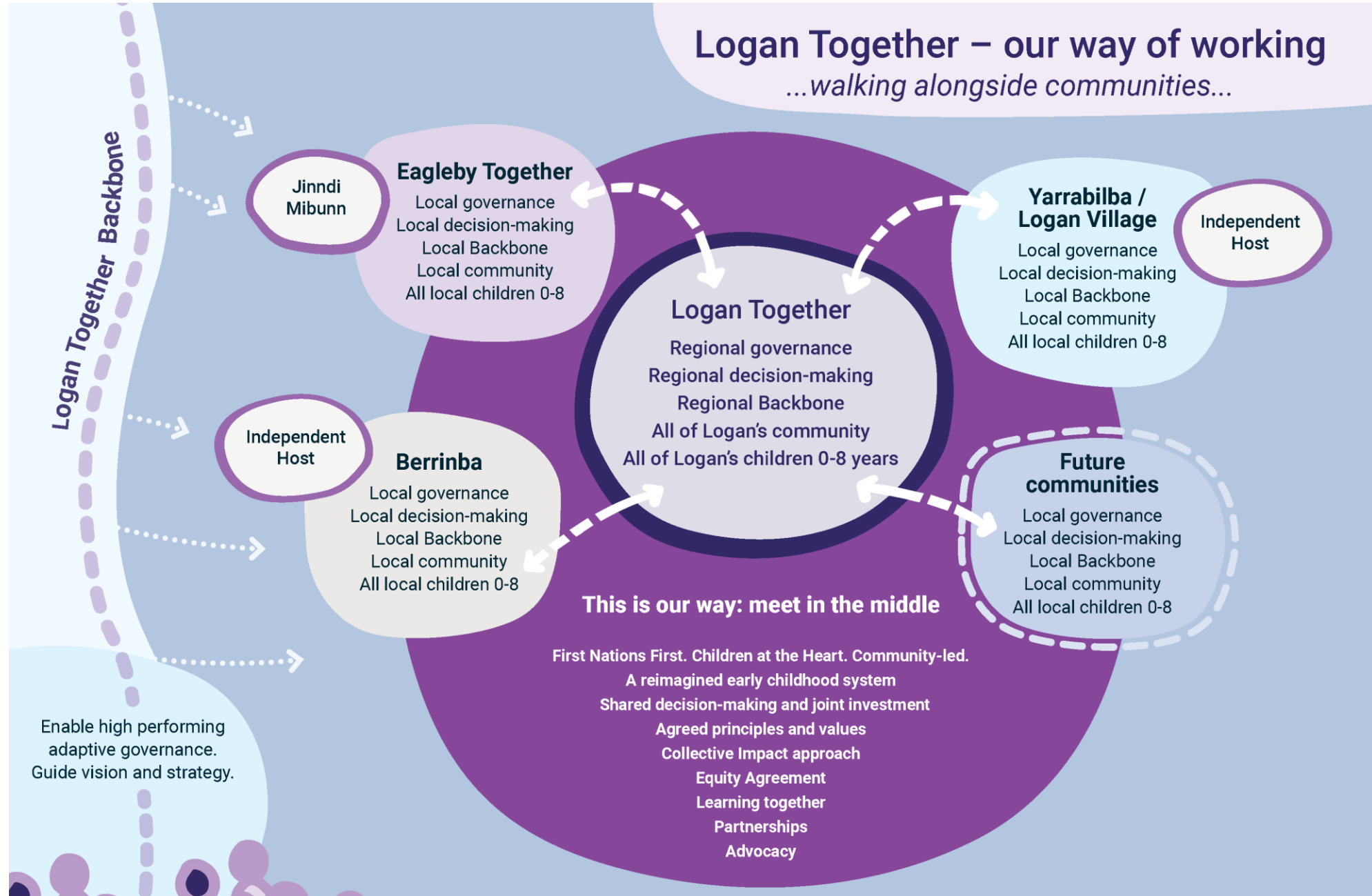


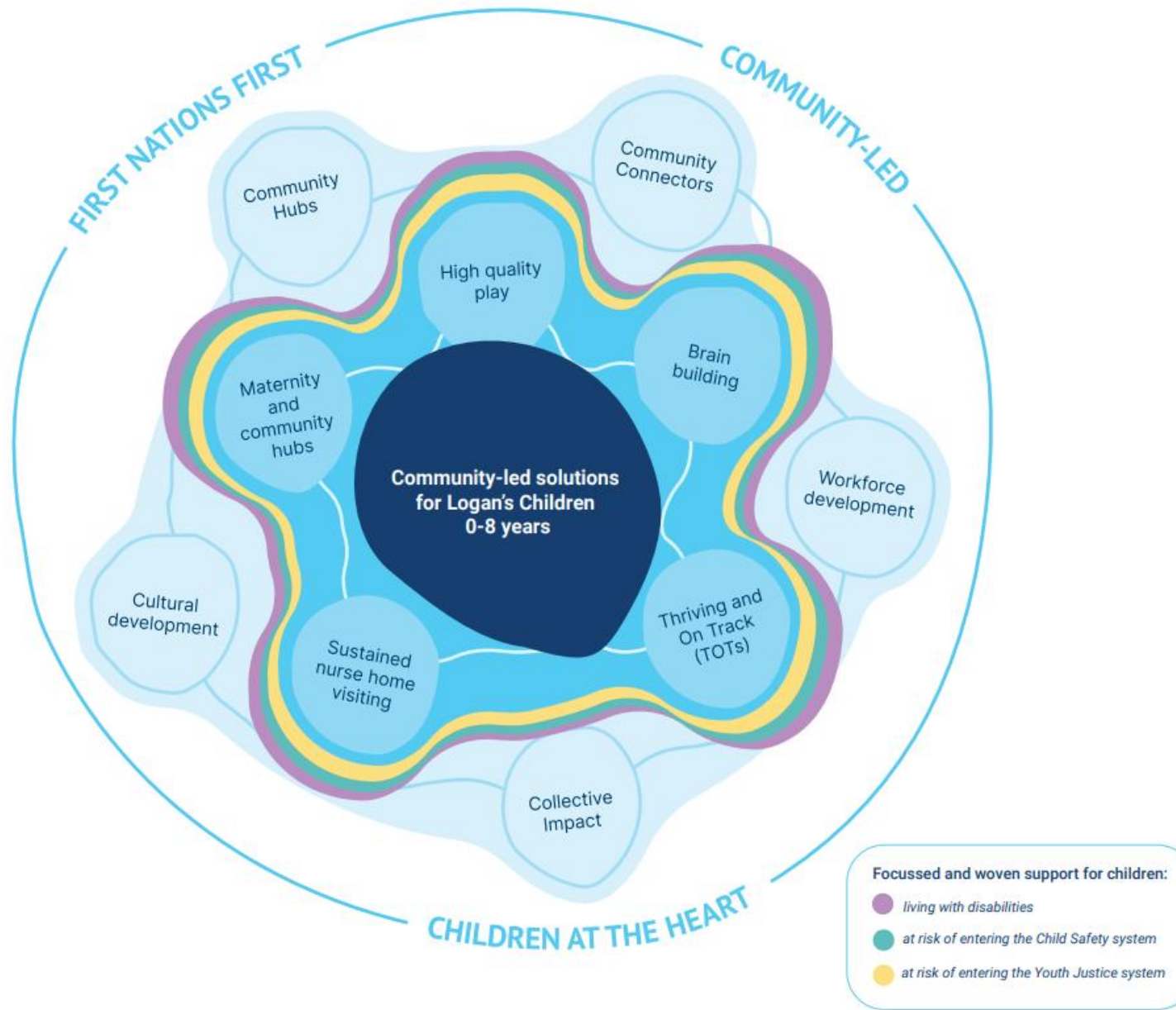
We believe power should be shared equally with our diverse community. Together we will enable community members to lead decision-making and share accountability with the sectors as confident, capable individuals.



Logan Together – our way of working

...walking alongside communities...





Logan First 2000 days

Community & First 2000 days

- Holding space with community - trust, relationship building, elevating lived experience and shared decision making
- Relationship between Hubs and community spaces – strengthen by Logan Together work.
- First Nations First, Community Led and Children at the heart ties our values together
- Truth telling and stories told over time tells the truth on access and equity, completes the data – FN, Pacifica and migrant and refugee cohorts – uniquely placed in Logan
- Hard to reach communities vs services not accessible for our families?
- Culturally responsive and safe spaces, tailored approach
- Community Connectors & diverse workplace



Logan First 2000 days

Community Challenges in Place – NGO perspective

- Short terms contracts and the world of ‘pilots’
- Stability of the frontline community workforce holding community
- Even though we know it works, we are still cobbling together pieces
- SSI management and involvement in current core suite model requires:
 - 7 small programs
 - 7 different funding bodies (government, NGO’s)
 - 5 ½ staff only 1 has a program contract beyond June 2025
 - Minimal to no **management** cost in 5 of the 7 contracts
 - 7 different contracts & reports, 7 different acquittals
 - Lots of in-kind from community and SSI management
 - & capacity building

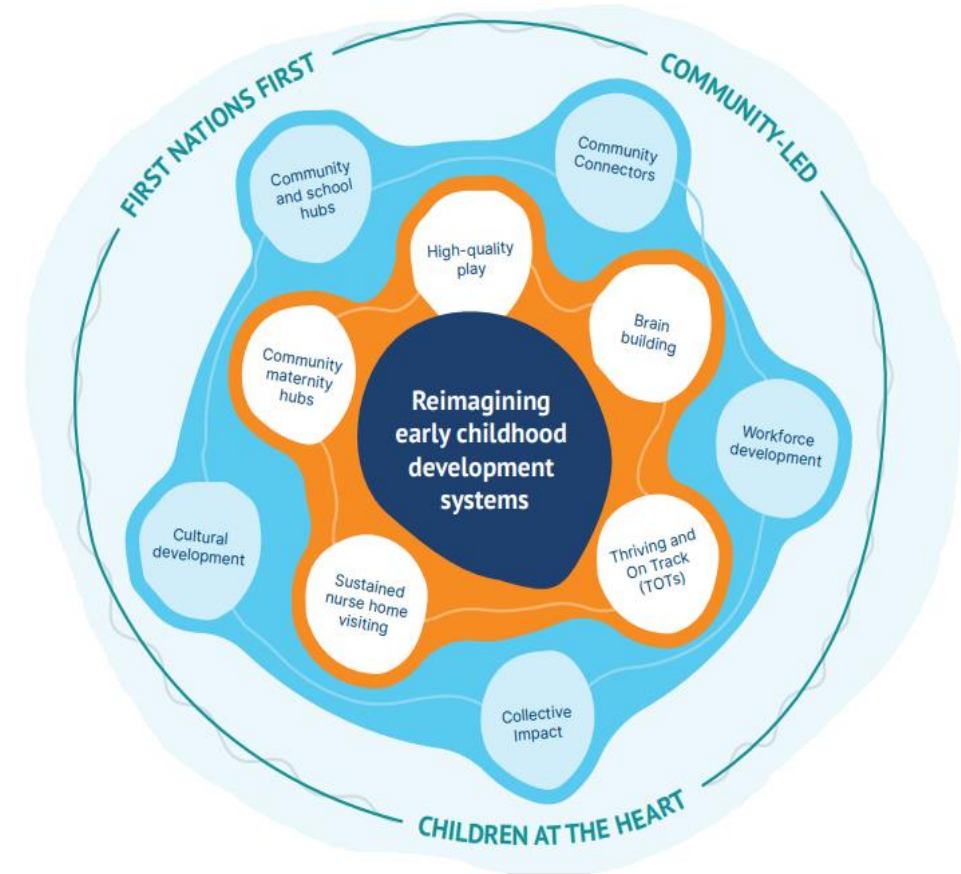
SSI

 Sustainable

Logan First 2000 days

Place-based systems change

- Logan Together core suite application across 5 focus communities:
 - service model flexibility with partners and community
 - co-invest- state, federal government, philanthropy to deepen impact
- Philanthropy –
 - fund things government won't e.g. collective impact, system navigation
 - engagement via understanding of joint organisational goals e.g. early child development systems change



Logan First 2000 days

Progress to date

- Understand common objectives, build working relationships, develop a joint business case
- Significant ‘inside’ brokering and coalescing to support a collective approach across philanthropy and between philanthropy and government e.g. The Bryan Foundation
- Issue with government ‘not being ready’ – i.e., intergovernmental coordination and investment policy regarding place and systems and ‘piece-meal’ funding
- Governance Group – investors, systems partners, community leaders drive investment via learning
- \$0.75M philanthropy investment to date ‘Year 0’



Logan First 2000 days

PHN levers for systems change and investment coordination

- Not for profit NGO and DGR1 status – can apply for/accept grants to increase impact
- Australian Government contract to commission health, wellbeing funding for region
- Regional needs assessments including engagement with communities
- Board and ELT supporting innovative, and community led ways of working
- Recognised across sector and community - health systems change
- Mature, sophisticated and agile commissioning processes (since 2017)



Philanthropic Interests

3 Systemic Challenge Insights

- Combining: Community Leadership + Integrated Child Development System + Place
- Investment Co-ordination
- Navigate Innovation: Flexibility, Responsiveness, Accountability

“Funding comes in like a meteor shower. What we need is someone, somewhere to bring things together and help shape it in a way that makes sense for the community”



commissioning
innovation
boundary-flexing
community
results
governance
responsive
linkers
coordination
scale
efficiency
dividend
leadership
trust
relationship-ninjas
navigate



